

PART OF S.W. 1/4 SEC. 15, T.5N., R.1W., S.L.B. & M.
OAK CREEK ESTATES PHASE 5

271

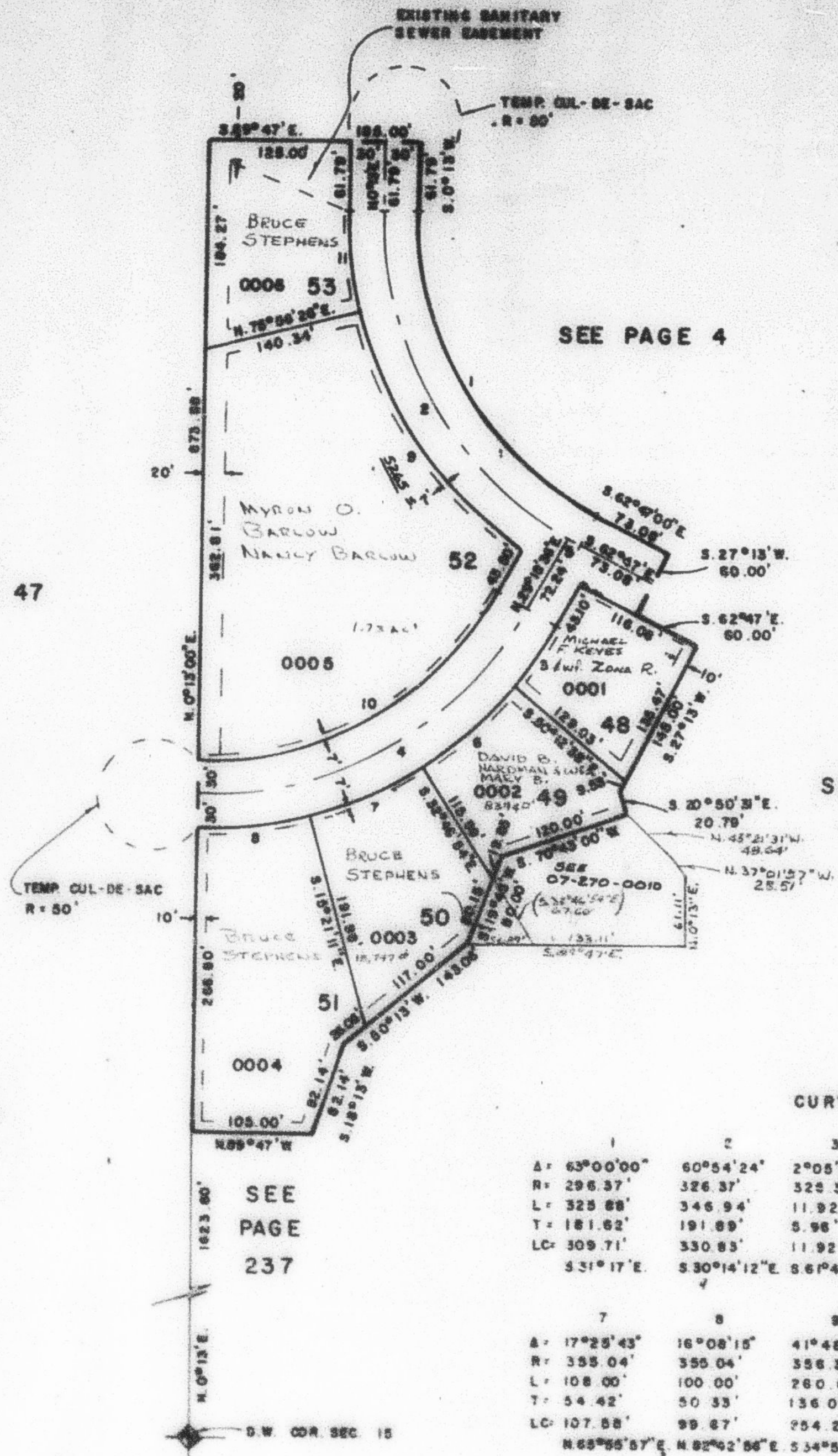
TAKING UNIT 27

IN SOUTH OGDEN CITY

PREFIX 07-271

SCALE 1" = 100'

SEE PAGE 4



10' UTILITY EASEMENTS EACH SIDE OF PROPERTY LINE AS INDICATED BY DASHED LINES. ALL EASEMENTS TO BE USED FOR IRRIG. WATERLINES, DRAINAGE, SANITARY & STORM SEWERS, POWERLINES, TELEPHONE LINES & OTHER PUBLIC UTILITIES. FRONT PROPERTY LINE UTILITY EASMTS ARE 7' WIDE. OTHER WIDTHS OF EASMTS ARE AS SHOWN

FOR COMPLETE ENG. DATA SEE ORIG. DEV. PLAT IN BOOK 25, PAGE 94